



IDIS Discovery

Operation Manual

Before reading this manual

The **IDIS Discovery** provided with the product is a software for remote operation of the product. IDIS Discovery is used to connect to the product remotely using a network connection to modify and manage the device's settings. Please complete the connection and installation by following the instructions in the product's operation manual and run the IDIS Discovery program on the user's PC.

Run

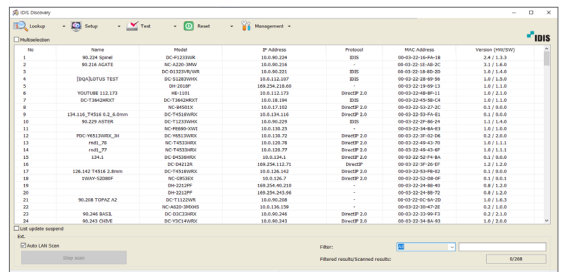
The recommended specifications for running and using the program are as follows.

- **OS:** Microsoft Windows XP x86 (32 Bit) (Service Pack 3), Microsoft Windows Vista x86 (32 Bit) (Service Pack 1), Microsoft Windows 7 x86 (32 Bit)
- **CPU:** Intel Pentium IV (Celeron) 2.4GHz or better
- **RAM:** 512MB or higher
- **VGA:** AGP, Video RAM 8MB or higher (1024x768, 24bpp or higher)

- 1 Download the IDIS Discovery program from our website: www.idisglobal.com.
- 2 Run IDIS Discovery program by double-clicking on the file.
- 3 Select the desired language option in the Language Options window. To select a language every time the program is run, choose **Select language when starting**. To select a primary you wish to use, select **Always start using the language below** and choose a language in the list. Your language options can be modified running the program.

- 4 In the main window that follows, you can connect to a product and change the product's settings. To change the settings of multiple devices at once, choose **Multiselection** option. (Only applies to identical models)

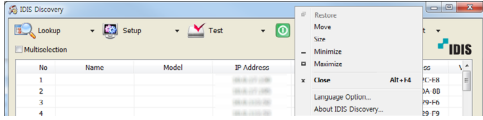
- Do not manually change the IP address of the PC while IDIS Discovery program is running. Manually changing the IP address may interrupt the network connection between the PC and the products.
- This product contains software developed by OpenSSL Project for use in Open SSL Toolkit. (<http://www.openssl.org/>)



Multiselection option may not be supported for some functions.

Language Option / About IDIS Discovery

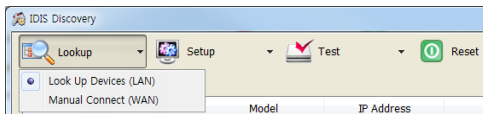
When you right-click anywhere on the title bar of IDIS Discovery program, the following menu will appear.



You can use this menu to change IDIS Discovery program's language options or check the program version.

Lookup

You can find the product you wish to connect to. In the main screen, click the **Lookup** icon. A find menu will appear on the screen.



You can use this menu to change IDIS Discovery program's language options or check the program version.

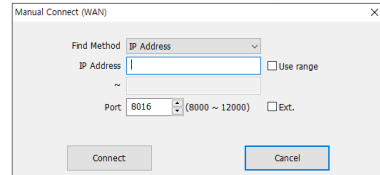
Look Up Devices (LAN)

A product can be found on the list below if it is connected via LAN. Select the product you wish to connect to.

Manual Connect (WAN)

If the product is connected via WAN, you can find the product by entering its address.

- 1 In the Find menu, select **Manual Connect (WAN)**. A settings window will appear.



- 2 Select the search method and click **Connect**. The product details will appear on the main screen.

- **IP Address:** Enter the IP address and port number of the product you wish to find.
- **Domain Name:** If the product uses Domain Name Service (DNS), enter the product's domain name registered on the DNS server and port number.
- **Use FEN:** If the product uses FEN (For Easy Network Service), enter the name of the product registered on the FEN Server, and enter the FEN Server's address and port number.



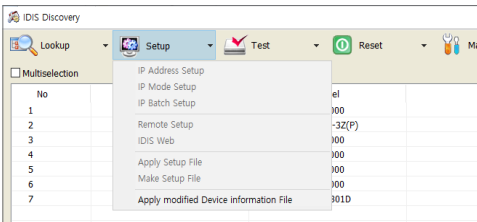
For more details on FEN feature, refer to the product operation manual.

Setup

Changes device's settings.

- 1 In the main screen, select the product you wish to change the settings of.
- 2 Click on the **Setup** icon. **Setup** menu will appear on the screen.

- The **Setup** menu can be brought up by selecting the product first, and then right-clicking on the product



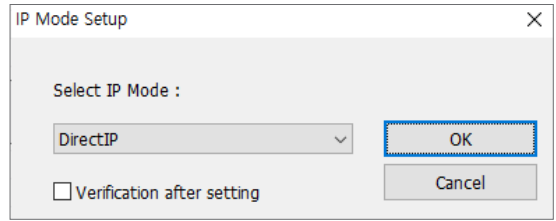
- Some functions in the Settings menu may not be supported depending on the product.

IP Mode Setup

The protocol for products with DirectIP™ support can be changed.

- 1 Select the product in the main screen.
- 2 In the Settings menu, select **IP Mode Setup**.

- This function is disabled if it is not supported by the product.



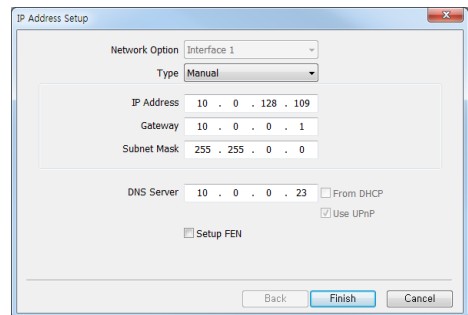
- **DirectIP™**: Used with DirectIP™ NVR to use the connect to the camera without additional network settings by the user. If DirectIP™ protocol is activated, IP Address setting operation will be disabled automatically.
- **IDIS**: Used to connect to a camera from a software previously installed on the PC or existing NVR using a network connection. Establishing the connection requires additional camera configuration.

- The DirectIP2.0 models which can be switched to Link-local only activates the option in the IP mode setup.

IP Address Setup

Changes the product's IP address.

- 1 Select the product in the main screen.
- 2 In the Settings menu, select **IP Address Setup**.



- **Network Option**: If there is more than one network adapter installed on the PC, select the network adaptor to be used to connect to the product.
- **Type**: Select a network connection type from **Manual configuration**, **DHCP**, or **ADSL** and select the settings values for establishing a network connection.

- For more details, refer to the product's operation manual.
- **ADSL** connection may not be supported depending on the product.

- **DNS Server:** Enter the DNS server's IP address. When DNS server is set up, you can use domain names instead of IP addresses when configuring the FEN Server, time server and SMTP server. If the product is connecting to the network using DHCP, select **From DHCP** to automatically acquire the DNS server's IP address from the DHCP server. (Only applies to certain products.) In such case, the updated address is automatically displayed on the next connection.
- **Setup FEN:** Select when use FEN function. When this option is selected, **Done** button will change to **Next**. Click **Next** to configure the FEN function.

For more details on FEN setup, refer to the product operation manual.

IP Batch Setup

Select multiple devices on the network and change them into sequential IP.

Remote Setup

All of device's system settings can be changed.

For more details, refer to the product's operation manual.

IDIS Web

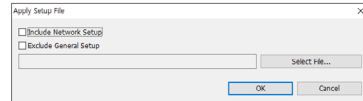
IDIS Web is a program that allows user to monitor live videos transmitted from the product on the Internet without installing any additional programs. It can be accessed anytime, anywhere using a common web browser (Internet Explorer). (Only applies to certain products.)

For more details, refer to the product's operation manual.

Apply Setup File

The products settings values, saved as **.dat** files can be applied to one or more products.

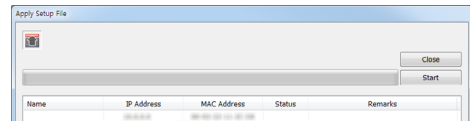
- 1 Select the product in the main screen.
- 2 In the Settings menu, choose Select a **Apply Setup File**.



- **Include Network Setup:** Select whether to include network setup (excluding FEN setup) when applying setup files.

For more details on network setup, refer to **Remote Setup - Network** menu.

- **Exclude General Setup:** Select to apply settings except for general setup (name, timezone, etc.)
- **Select file:** Click on the button, select a desired file and click **OK**.



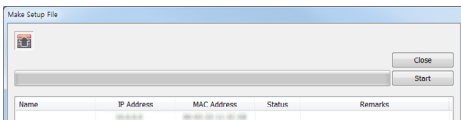
- 3 When the list of selected products appear at the bottom of the setup window, click **Start**. The settings values of the selected setup file will be applied to the products on the list.
- 4 When the process is completed, the results will be displayed in the **Status** field as **Successful** or **Failed**. If it failed, the reason for failure will be shown in the **Remarks** field.

- Select **Multiselection** option is supported for **Apply Setup File**. However, **Include Network Setup** option is disabled when more than one product is selected.
- If the network setup values included in the setup file is being used by another product, do not select **Include Network Setup** option when applying the setup files. If you do, it may result in failure to connect to the subject product.

Make Setup File

You can create a **.dat** file and save the current setup values of multiple products.

- 1 Select the product in the main screen.
- 2 In the Settings menu, select **Make Setup File**.
- 3 In the screen for designating a folder, select a folder where you wish to save the setup file (only when multiple devices are selected).

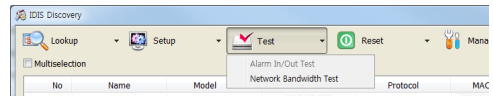


- 4 When the list of selected products appear at the bottom of the setup window, click **Start**.
- 5 Save the current setup values of the products on the list as a **.dat** file in the designated path. The filename is designated automatically using the product's name and MAC address.
- 6 When the setup file is saved, the results will be displayed in the **Status** field as **Successful** or **Failed**. If it failed, the reason for failure will be shown in the **Remarks** field.

Testing

The operational status of alarm-in/out equipment connected to the product and network bandwidth in defined conditions can be tested. (Only applies to certain products.)

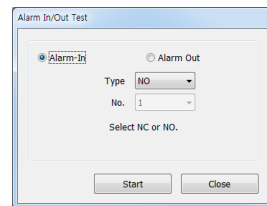
- 1 Select the product in the main screen.
- 2 Click the **Test** icon. Test menu will appear.



Alarm In/Out Test



First, make sure that the alarm-in/out equipment is connected to the product correctly.



- **Alarm In:** Select to make check if the alarm-in equipment is operating correctly. Select the alarm-in type and input number for the connected alarm input equipment. Click **Start** and activate the alarm input equipment within 5 seconds. The program will show a success or failure message depending on whether an alarm input was detected or not.
- **Alarm Out:** Select to make check if the alarm-out equipment is operating correctly. If the equipment is connected properly, the alarm-out device will activate for 3 seconds after **Start** button is clicked.

Network Bandwidth Test

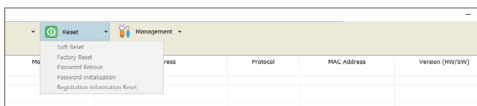
Tests whether the videos can be transmitted to a remote location using the defined settings with the currently available network bandwidth.

- **Network Bandwidth Test:** Select the transmission condition to test and click **Start**. Once the test begins, the Start button will change to **Stop**. Once the test is completed, the results will be shown in the **Bandwidth** field as either **Sufficient** or **Insufficient**. To stop a test in progress, click **Stop**.

Reset

The product can be reset or its settings can be initialized.

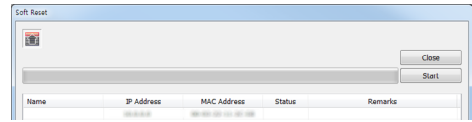
- 1 Select the product in the main screen.
- 2 Click the **Reset** icon. Reset menu will appear.



Soft Reset

Restarts the product.

- 1 Select the product in the main screen.
- 2 Select **Soft Reset** from the Reset menu.

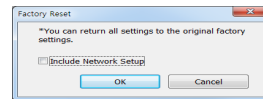


- 3 When the list of selected products appear at the bottom of the setup window, click **Start**. The system will reset the products on the list.
- 4 When the reset is completed, the results will be displayed in the **Status** field as **Successful** or **Failed**. If it failed, the reason for failure will be shown in the **Remarks** field.

Factory Reset

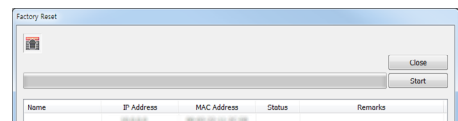
Initializes all setup values of the product to factory settings.

- 1 Select the product in the main screen.
- 2 Select **Factory Reset** from the Reset menu.




- 3 Select whether to include network setup when performing a factory reset, and click **OK**.

- ✓ For more details on network setup, refer to **Remote Setup - Network** menu.



- 4 When the list of selected products appear at the bottom of the setup window, click **Start**. The factory reset of the products on the list will begin.
- 5 When the reset is completed, the results will be displayed in the **Status** field as **Successful** or **Failed**. If it failed, the reason for failure will be shown in the **Remarks** field.

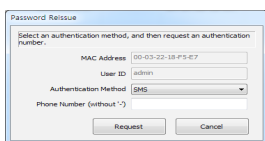
6 The system will restart after a factory reset.

 Performing a factory reset will result in losing all setup values defined by the user.

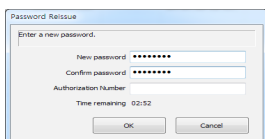
Password Reissue

Reissues the password of the product.

- 1 Select the product in the main screen.
- 2 Select **Password Reissue** from the Reset menu.



- 3 Select an authentication method and enter the email address/phone number, then click **Request**.



- 4 Enter the new password and authorization number, then click **OK**.

Password initialization


Collectively register the initial password and personal information (phone number, email address) for devices which support password initialization.

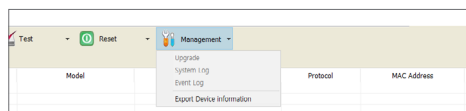
Registration information Reset


If a camera registered to the NVR is disconnected without unregistering from the NVR, you can re-register after initializing the registration information (DirectIP2.0 models only).

Management

Used to upgrade software or checking system logs or event logs.

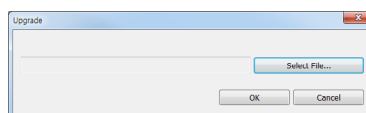
- 1 Select the product to manage in the main screen.
- 2 Click on the **Management**  icon. Management menu will appear on the screen.



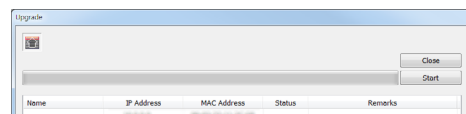
 **Event Log** function may not be supported depending on the product.

Upgrade

- 1 Select the product in the main screen. In the Management menu, select **Upgrade**.





- 2 Click the **Select File** button.
- 3 Select an upgrade file and click **OK**.



- 4 When the list of selected products appear at the bottom of the setup window, click **Start**. The software of the products on the list will be upgraded.

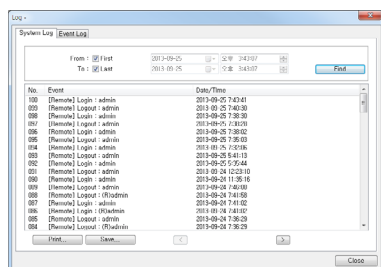
- When the upgrade is completed, the results will be displayed in the **Status** field as **Successful** or **Failed**. If it failed, the reason for failure will be shown in the **Remarks** field. Once upgrade is completed, the product will restart.

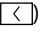

-  You can also upgrade the software using a USB flash drive. (Only applies to certain products.)
- For more details, refer to the product's operation manual.

-  Do not modify the upgrade file. It may result in product failure.
- Do not disconnect power while upgrade is in progress. It may damage the product.

System Log / Event Log

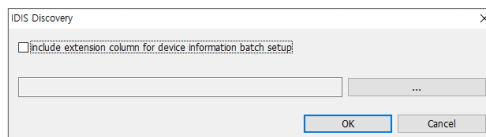
- Select the product in the main screen.
- In the Manage menu, select **System Log** or **Event Log**.



- From, To:** Select the first and last date and time you wish to search. Selecting **From** option will start searching from the first log. Selecting **To** option will search every log until the most recent log.
- Find:** Click to view the system logs for the designated date and time. Up to 100 logs are shown per page.
- Print / Save:** Click Print to print the log shown on the screen. Click Save to save the log as a **.txt** file. System logs can be saved as password-protected HTML files (.html). Password must be entered to view HTML files.
- Go button:** You can go to the Previous Page () or the Next Page ()
- Close:** Closes the log screen.

Export Device information

- Select the product in the main screen.
- In the Manage menu, select **Export Device information**.



- When the above window is displayed, select a file to save as a CSV file.
- include extension column for device information batch setup:** Uncheck to save a CSV file with default items (No., Name, Model, IP address, Mac address, Version), and check to save a CSV file with (Subnet, Gateway) in addition to the default items.



IDIS Co., Ltd.

For more information, please visit at
www.idisglobal.com