



# IDIS Center


Operation Manual

# Before reading this manual

---

This manual describes the installation and operation of **IDIS Center** software, which is designed to be used with the remote network cameras, network video transmitters and digital/network video recorders (DVRs/NVRs). **IDIS Center** allows you to access remote sites and monitor live video or playback and search recorded images on remote DVRs via network connection using the Apple based on Mac.

 This product includes software developed by the OpenSSL Project for use in the OpenSSL Toolkit (<http://www.openssl.org/>).

 The IDIS Center program might not be supported, depending on the specifications and version of the remote DVR.


## System Requirement

Recommended computer system requirements for program operation

<b>OS</b>	Mac OS X v10.8 or later
<b>CPU</b>	Intel Core2 Duo 2.26GHz or faster
<b>RAM</b>	DDR3 2GB or more
<b>VGA</b>	NVIDIA Geforce 9400 256MB (1024X768@60Hz) or more
<b>LAN</b>	10/100/1000 Base T

# App Installation

---

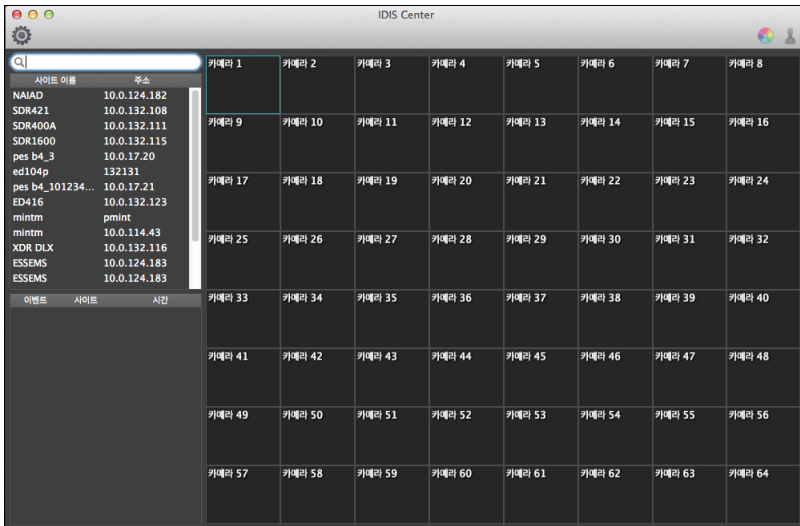
- 1 Connect to the **App Store**  on your device.
- 2 Enter **IDIS Center** in the search box at the top-right corner of the **App Store** screen.



- 3 Install the **IDIS Center** program on your PC, then run the program.

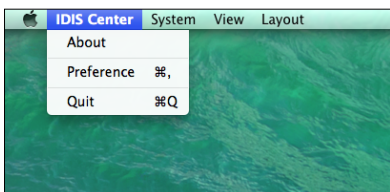
# Running & Configuring Program

Launch IDIS Center. The following start-up screen will appear.



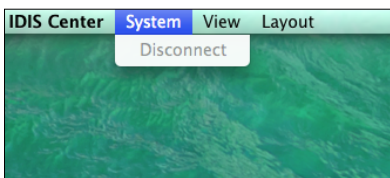
## Menu

### IDIS Center



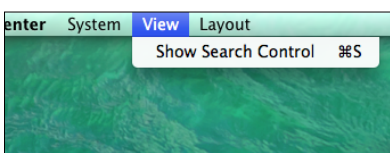
- **About** (IDIS Center info): Display the software version.
- **Preference** (Configuration): Refer to the "Toolbar" section at the next page.

### System



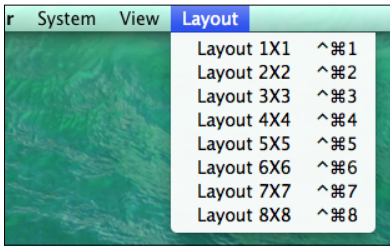
- **Disconnect** (Connect/Disconnect): Release the connection based on the currently selected camera.

### View



Click the **Show Search Control**, making the Search Control show up on the screen.

## Layout



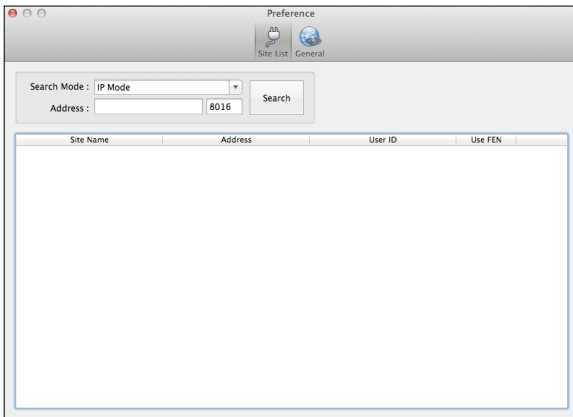
Change the layout of screen. When changing the screen layout, the selected camera on the current screen will be located in the first cell of the new layout.

## Toolbar



Color Control and PTZ Control are supported only in the Watch Mode.

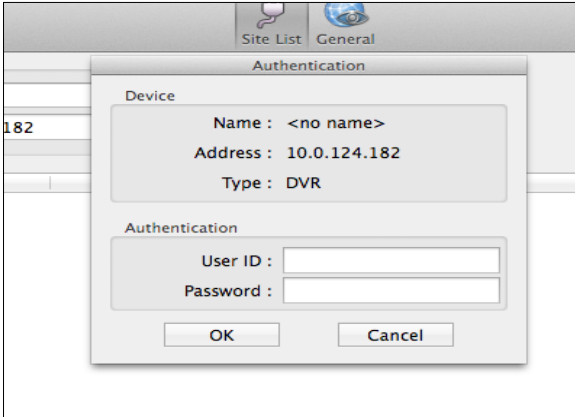
- **Preference:** Register the device that you watch or play.



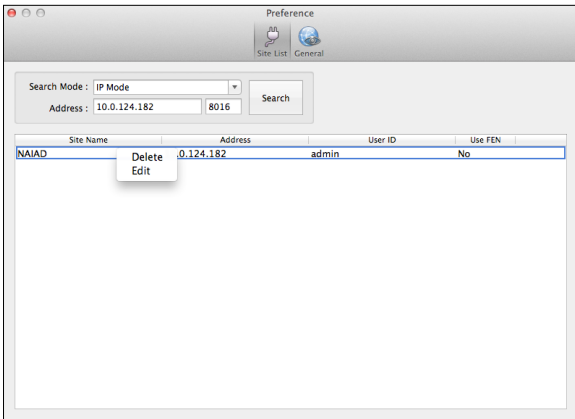
- 1 Click the preference , then select the **Search**.

- **Search Mode**

- **IP Mode:** Enter the IP in the address box, then press the **Search** button. It is recommended that the device not be networked via DHCP (Dynamic Host Configuration Protocol). If the device is networked via DHCP, connection to the device may not be made properly depending on changes in the external network environment.
- **FEN (DVRNS) Mode:** Enter the FEN(DVRNS) name in the address box, then press the **Search** button. Allows you to enter the device name registered on a FEN server or a DVRNS server if the device uses the FEN (DVRNS) function. Ensure the FEN server or DVRNS server information on which the device is registered is correct. If the FEN server or DVRNS server information is not correct, the device will not be found.

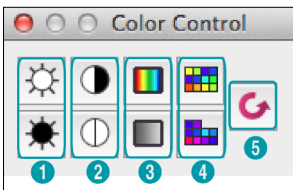


- 2 When the device is detected, the window for authentication entry will show up.
- 3 Enter the exact ID and password, then press **OK**.




- 4 When the User ID and Password are entered exactly, the device will be added to the device list. Click the device for deletion/editing with the right button of mouse, then click **Delete/Edit**.

• **Color Control** : Control the color of each surveillance image by clicking icons on the color panel.



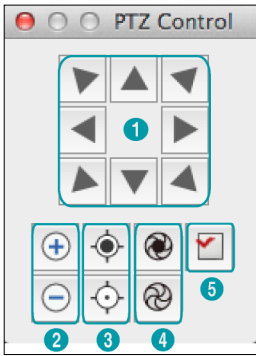
- 1 Brightness
- 2 Contrast
- 3 Saturation
- 4 Hue
- 5 Undo

Clicking the  icon, cancel the image processing operation and reload the original image. Only the user authorized for color control can adjust the image remotely.


The color should be adjusted properly. The adjusted image cannot be restored to the original image.

Not all devices support the color control. Refer to the related user manual of device.

- **PTZ Control** : Control the PTZ of each camera by clicking icons on the PTZ panel.



- 1 Move buttons
- 2 Zoom In/Out
- 3 Focus Near/Far
- 4 Iris Open/Close
- 5 View Preset

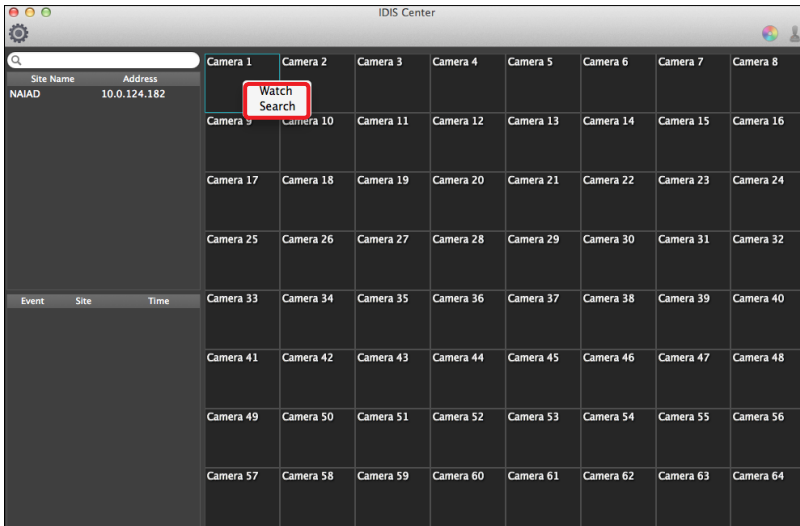
Only the user authorized for PTZ control can control the PTZ remotely. The  icon will display on each camera screen when the PTZ can be controlled remotely.



Not all devices support the remote PTZ control. Refer to the related user manual of device.

# Watch

Select the registered device in the list, then drag and drop it to the screen. The **Watch** or **Search** menu will show up.

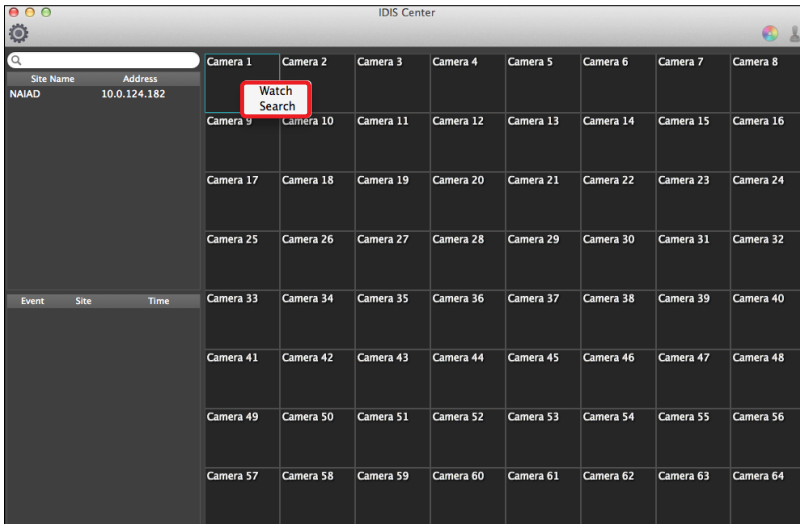


- Select **Watch**. The image of camera can be monitored remotely in real time. The color control and PTZ control button will be activated according to the selected camera.

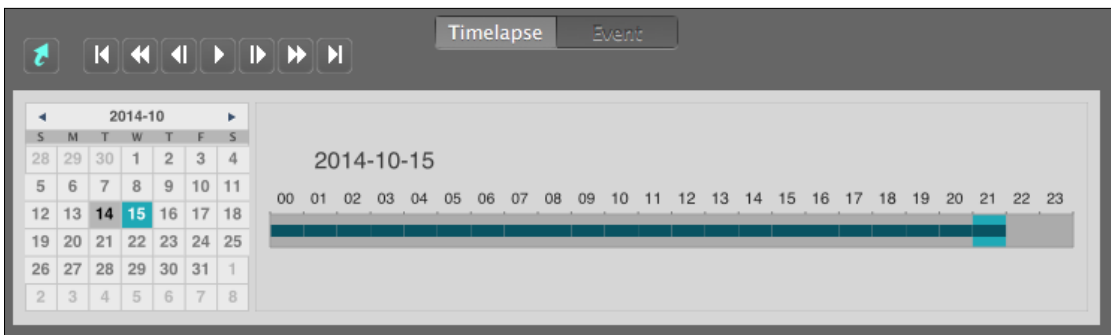


# Search & Playback

Select the registered device in the list, then drag and drop it to the screen. The **Watch** or **Search** menu will show up.



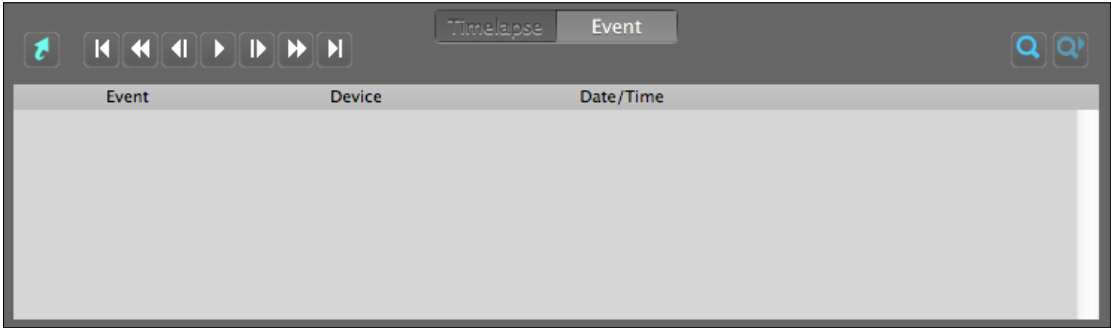
## Timelapse Search




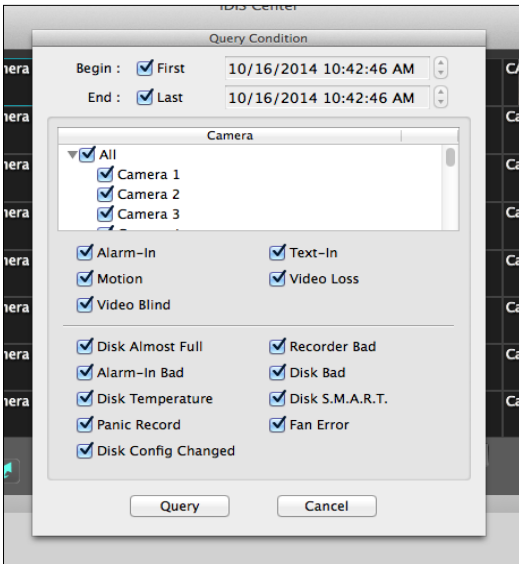
- Select **Search**. The calendar and time table will show up at the bottom of screen.
- The date with the recorded data is marked in **bold**.
- If you click the date (Calendar), the recording time of selected date will be displayed on the time table.
- If you click the time (Time table), the image of selected time will be displayed.
- After that, you can play the image with the playback buttons and you can go to the specific time directly by clicking the Goto Time button.

## Event Search

1 Select **Event**. The event search mode will show up at the bottom of screen.

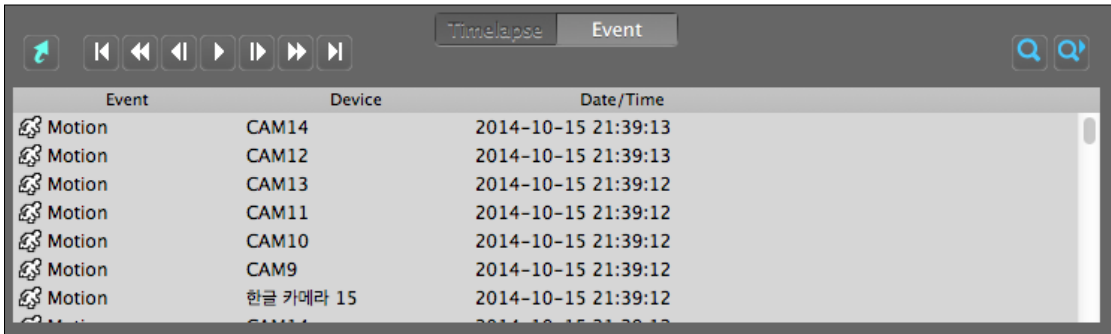



2 Press the Search button , the Query Condition setting window will show up.



**NOTE:** When *First* is selected for the search begin time, the search will be from the first recorded data. When *Last* is selected for the search end time, the search will be to the last recorded data.










- 3 Set up the search criteria for the event search, then click the **Query** button. The results will be displayed in the event list.



- Click the desired event in the list, going to the related image. The list can display 100 results at a time, but you can see more results by clicking the More button .
- After selecting the desired event, the associated images can be detected by clicking the playback buttons.

## Goto Time and Playback Buttons



-  **Goto Time:** You can directly go to the images of specific time by setting the date and time.
-  **Playback Buttons:** Performs the following functions as described below.
  -  Go to the First Image
  -  Go to the Next Image
  -  Fast Backward Play
  -  Fast Forward Play
  -  Go to the Previous Image
  -  Go to the Last Image
  -  Play

- The speed of fast forward depends on network bandwidth and the number of recorded images per second.



**IDIS Co., Ltd.**

For more information, please visit at  
[www.idisglobal.com](http://www.idisglobal.com)