

DC-D4513RX 2.8mm | 4.0mm

- Easy installation with DirectIP NVR
- 5MP (2592x1944) resolution
- Fixed-focal lens (f=2.8mm/4.0mm)
- micro SD/SDHC/SDXC
- Two-way audio
- Alarm in / out
- PoE (IEEE 802.3af Class 2)
- Day and night (ICR)
- True wide dynamic range (WDR)
- IR LED (Distance : 30m (f=2.8mm) / 20m (f=4.0mm))
- 3-axis mechanical design for installation
- Supports ONVIF



SPECIFICATIONS

VIDEO	
Image Sensor	1/2.8" CMOS
Max. Resolution	2592 x 1944
Scanning Mode	Progressive Scan
Lens Type	Fixed-focal
Focal Length	f = 2.8mm / 4.0mm
Aperture	F2.0 (f = 2.8mm) / F2.15 (f = 4.0mm)
Iris Control	Fixed Iris
Angular Field of View	104.8° (H) 76.9°(V) 130°(D) (f = 2.8mm) 79.2° (H) 56.6°(V) 103°(D) (f = 4.0mm)
Pan / Tilt Range	Pan: -170° ~ 170°, Tilt: -5° ~ 67.5°, Rotate: -109° ~ 109°
Min. Illumination	COLOR : 0.1 lux @ F2.0 B/W : 0 lux (IR LED ON)
Dynamic Range	120dB
Electronic Shutter Speed	Auto / Manual (1/30 ~ 1/10,000), Anti-Flicker, Slow Shutter (1~1/5, 1/7.5, 1/15)
Day and Night	IR cut filter with auto switch
IR Distance (LEDs)	30m / 98.4 ft(4ea) (f=2.8mm) 20m / 65.6 ft(2ea) (f=4.0mm)
Image Setting	Configurable Exposure, White Balance, Sharpness
Digital Noise Reduction	Configurable 2DNR/3DNR
Backlight Compensation	On / Off / HSBC
Image Stabilizer	Yes (DIS)
De-fog	On / Off
Privacy Masking	8 Zones
Intelligent Video	Video Motion Detection, Active Tampering Alarm, Trip Zone
Video Out	-
NETWORK	
	DirectIP Mode
Video Compression	H.265, H.264 (MP) M-JPEG
Intelligent Codec	Supported
Bitrate Control	H.265 - VBR / CBR H.264 - VBR / CBR
Audio Compression	ADPCM 16K, G.726, G.711 u-Law, G.711 a-Law
Two-way Audio	Yes
IP Camera Protocol	DirectIP 2.0, ONVIF
Max. Frame Rate	4:3 mode : 30ips : 2592 x 1944(WDR) 16:9 mode : 30ips : 2592 x 1456(WDR)
Supported Resolution	4:3 : 2592x1944, 1920x1440, 1280x960x 640x480 16:9 : 2592x1456, 1920x1080, 1280x720, 640x360
Multi-video Streaming	Quadruple Streaming
Network Protocols	DirectIP 2.0 Protocol, RTP/RTSP/TCP, RTP/RTSP/HTTP/TCP, RTP/UDP RTSP/TCP, HTTP, HTTPS, FTP, SNTp, SMTP, FEN, mDNS, Upnp
Security	SSL Encryption, Multi-user Authority, IEEE 802.1x IP Filtering, HTTPS, SSL Encryption
Remote Access Client	DirectIP NVR Connection, IDIS Web, IDIS Mobile, IDIS Solution Suite
Ethernet	RJ45 (10/100BASE-T)
Recording Session Buffer (NLTSrec)	Yes (Up to 100MB)
Edge Storage	micro SD/SDHC/SDXC, Smart Failover (Up to 256GB)
ALARM AND EVENT	
Trigger Event	Motion Detection, Alarm in, Audio detection, Tampering, Trip Zone
Event Notification	Remote S/W, Email (With Image)
Audio In / Out	1(Built MIC)+1 / 1
Alarm In / Out	1 / 1
ENVIRONMENTAL	
Vandal Proof Casing	-
Outdoor Ready	-
Operating Temperature	-10°C ~ +50°C (+14°F ~ +122°F) *Starting Up at Above 0°C (32°F)
Operating Humidity	0% ~ 90%
ELECTRICAL	
Power Source	PoE (IEEE 802.3af Class 2)
Power Consumption	PoE, (IEEE 802.3af Class 2) 6.2W
Approvals	FCC, CE, KC
MECHANICAL	
Dimensions	Ø110 x 88mm (Ø4.33" x 3.46")
Weight	0.25kg (0.55lb)

DIMENSIONS

(Unit - mm)



ACCESSORIES (OPTIONAL)

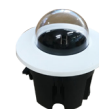


DA-FM4100



DA-WM2160

ACCESSORIES CONFIGURATION TREE



DA-FM4100
Flush Mount



DA-WM2160
Wall Mount